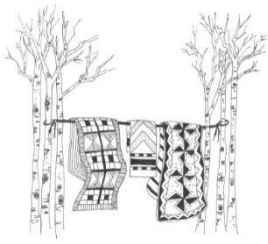


# Quilts in the Aspen Quilt Show

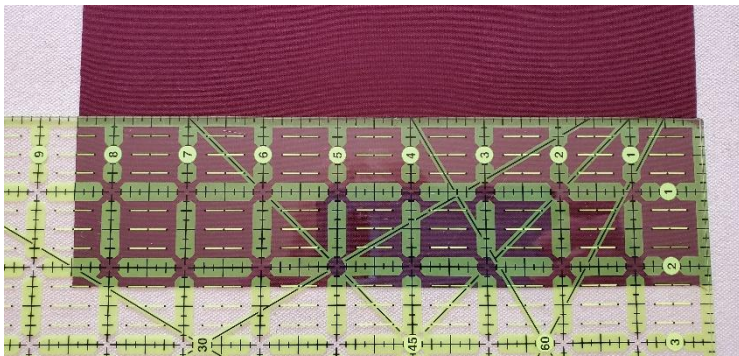
July 20<sup>th</sup> – 21<sup>st</sup> 2025

Sleeves ***MUST*** be on by the June 27<sup>th</sup> Photograph Day.

Every quilt must have a label & in its own pillowcase / Name on pillowcase



## Step-by-steps instructions for adding a new sleeve:



Cut the sleeve 8½" wide x the exact width of your quilt.

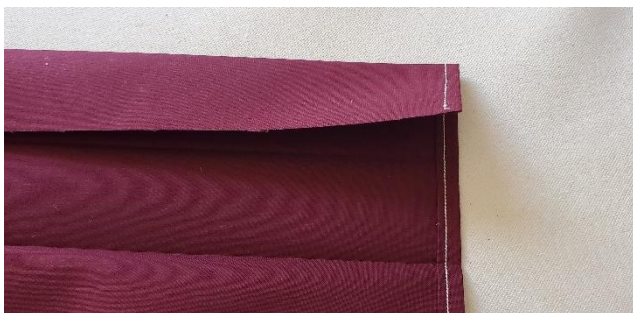
If large quilt, make two parts. 2 inches apart



Fold the ends in twice (¼" and ¼" again) to finish each end of the sleeve. Stitch using a scant ¼" seam allowance.



It helps to fold the sleeve in half lengthwise first and press to create a center crease. Wrong sides together.



Unfold sleeve,

Press one half to the center of the sleeve



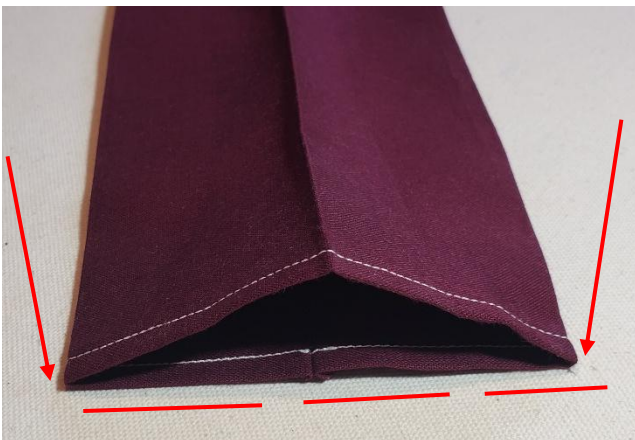
Fold the other half to the center of the sleeve



Unfold and put raw edges together  
Stich with the wrong sides together



Press seam open.  
This will make the sleeve lay ni



This is how it will look when Done.

Do not iron Flat.

Keep those 3 creases

Whipstitch the sleeve to the back of your quilt.

Whipstitch both ends of the sleeve to the quilt as well.

The sleeve **MUST** be secure to the back of the quilt.